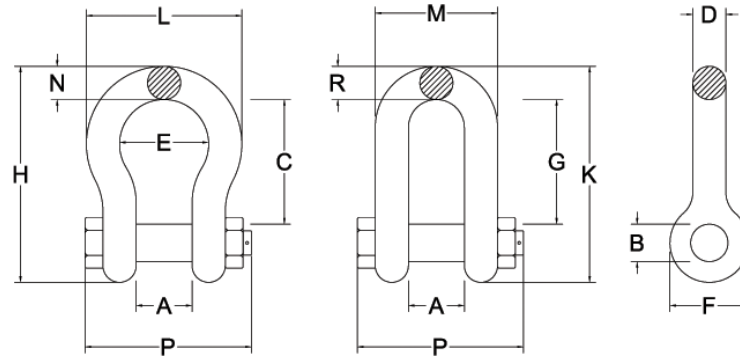




# MARINE FENDERS INTERNATIONAL, INC.



## BOLT TYPE ANCHOR AND CHAIN SHACKLES

Nominal Shackle Size (in.)	Working Load Limit (tons)	Dimensions inches														2130 Weight Each (lbs.)	2150 Weight Each (lbs.)
		A	B	C	D	E	F	G	H	K	L	M	N	P	R		
3/16	1/3	.38	.25	.88	.19	.60	.56	--	1.47	--	.98	--	.19	1.29	--	.06	--
1/4	1/2	.47	.31	1.13	.25	.78	.61	--	1.84	--	1.28	--	.25	1.56	--	.17	.13
5/16	3/4	.53	.38	1.22	.31	.84	.75	--	2.09	--	1.47	--	.31	1.82	--	.22	.23
3/8	1	.66	.44	1.44	.38	1.03	.91	--	2.49	--	1.78	--	.38	2.17	--	.33	.33
7/16	11/2	.75	.50	1.69	.44	1.16	1.06	--	2.91	--	2.03	--	.44	2.51	--	.49	.49
1/2	2	.81	.63	1.88	.50	1.31	1.19	1.63	3.28	3.03	2.31	1.81	.50	2.80	.50	.79	.75
5/8	31/4	1.06	.75	2.38	.63	1.69	1.50	2.00	4.19	3.75	2.94	2.31	.69	3.53	.63	1.68	1.47
3/4	43/4	1.25	.88	2.81	.75	2.00	1.81	2.38	4.97	4.53	3.50	2.75	.81	4.07	.81	2.72	2.58
7/8	61/2	1.44	1.00	3.31	.88	2.28	2.09	2.81	5.83	5.33	4.03	3.19	.97	4.71	.97	3.95	3.85
1	81/2	1.69	1.13	3.75	1.00	2.69	2.38	3.19	6.56	5.94	4.96	3.69	1.06	5.31	1.00	6.12	5.55
11/8	91/2	1.81	1.25	4.25	1.13	2.91	2.69	3.58	7.47	6.78	5.16	4.06	1.25	5.09	1.25	8.27	7.60
11/4	12	2.03	1.38	4.69	1.25	3.25	3.00	3.94	8.25	7.50	5.75	4.53	1.38	6.51	1.38	11.71	10.81
13/8	131/2	2.25	1.50	5.25	1.38	3.63	3.31	4.38	9.16	8.28	6.38	5.00	1.50	7.21	1.50	15.83	13.75
11/2	17	2.38	1.63	5.75	1.50	3.88	3.63	4.81	10.00	9.06	6.88	5.38	1.62	7.73	1.62	20.80	18.50
13/4	25	2.88	2.00	7.00	1.75	5.00	4.19	5.75	12.34	10.97	8.86	6.38	2.25	9.05	2.12	33.91	31.40
2	35	3.25	1.25	7.75	2.00	5.75	4.85	6.75	13.68	12.28	9.97	7.25	2.40	10.41	2.00	52.25	46.75
21/2	55	4.13	2.75	10.50	2.62	7.25	5.69	8.00	17.84	14.84	12.87	9.38	3.13	13.56	2.62	98.25	85.00
3	85	5.00	3.25	13.00	3.00	7.88	6.50	8.50	21.5	16.88	14.36	11.00	3.62	16.50	3.50	154.00	124.25
31/2	120	5.25	3.75	14/63	3.62	9.00	8.00	--	24.63	--	16.50	--	4.12	19.00	--	265.00	--
4	150	5.50	4.25	14.50	4.10	10.00	9.00	--	25.69	--	18.12	--	4.56	19.75	--	383.00	--