



MARINE FENDERS INTERNATIONAL, INC.



- Ultra heavy duty central steel core load distribution construction
- US Coast Guard approved inner closed cell rigid urethane buoyancy foam
- Impact absorbing, resilient heat laminated cross-linked polyethylene foam core foam
- Thick, tough filament nylon tire cord reinforced urethane skin



Custom end fitting available

- General purpose buoy designed to accommodate a variety of interchangeable bolt on end fitting options:



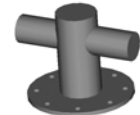
Bail eye



Swivel eye



Clevis eye



Mooring Tee

OCEAN GUARD UNIVERSAL BUOY

BUOY MODEL	NET BUOYANCY (MIN)		BUOY WEIGHT		BODY DIAMETER		BODY HEIGHT		OVERALL HEIGHT	
	LBS	KG	LBS	KG	FT	M	FT	M	FT	M
UB-1500	1,500	680	710	322	4.2	1.3	2.5	0.8	4.3	1.3
UB-2000	2,000	907	801	363	4.2	1.3	3.3	1.0	5.5	1.7
UB-2500	2,500	1,134	689	313	5.0	1.5	2.9	0.9	5.0	1.5
UB-3000	3,000	1,361	929	421	5.0	1.5	3.3	1.0	5.5	1.7
UB-4000	4,000	1,814	1,488	675	6.0	1.8	3.3	1.0	5.5	1.7
UB-5000	5,000	2,268	1,570	712	6.0	1.8	3.8	1.1	6.0	1.8

* ACTUAL VALUES FOR ABOVE SIZES MAY VARY +/- 15% DUE TO VARIATIONS IN MATERIALS, TEMPERATURES AND TOLERANCES.